

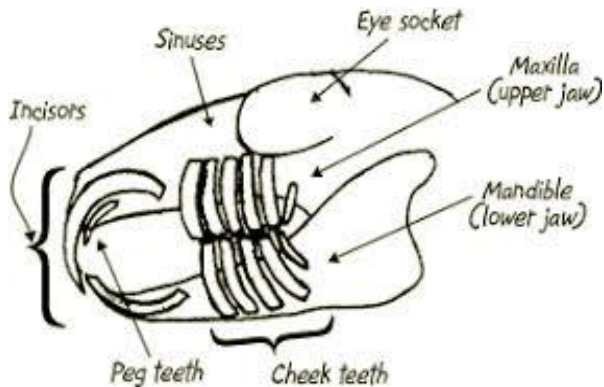
MALOCCLUSION OF INCISORS IN RABBITS

Drh. Ria Yunitianingsih

VITAPET ANIMAL CLINIC

Overview :

- Referring to the misalignment of teeth



The most common causes of dental disease :

- Diet
- Hereditary/ genetic
- Trauma

Signs of Malocclusion

- Overgrown teeth
- Swollen jaw
- Drop in weight due to not eating properly

Prevention/ Treatment

- Feed the correct diet of 80% hay
- Having the teeth trimmed every four to six weeks
- Incisor extraction